

# IN1100 Series

## Ultra-portable LED Projectors

Part #: IN1156, IN1188HD

IN1100 Series projectors fit anywhere, go anywhere, with ultra-long-lasting images and unbeatable quality and color.

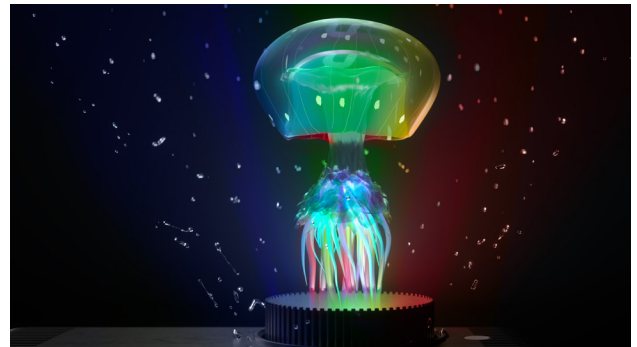


### Key Features:

- Quantum Color Engine for vivid, ultra-long-lasting images
- Amazing 30,000-hour light source
- Green, mercury-free technology
- 3000 lumens and available full 1920 x 1080 HD resolution
- Wireless, PC-less on-board document viewer with QuadView (with wireless adapter)
- Support for AirPlay and MiraCast

### Quantum Color Engine

The IN1100 Series is powered by the InFocus Quantum Color Engine for exceptional image quality over years of continuous operation. The Quantum Color Engine is based on solid-state illumination technology, and is tested for over 200 unique color parameters to ensure the most vivid images possible. A massive color gamut, up to 40% bigger than leading competitors, and high color luminosity ratio bring your screen to life. With no color decay, you can enjoy remarkable images for over 3 years of 24/7 operation or over 10 years of business hour operation.



### Superior Images

Get quality images and true-to-life colors with DLP technology with InFocus BrilliantColor implementation. 3,000 lumens mean bright, clear images even with the lights on, and 1,000,000:1 contrast ratio adds sharpness with darker blacks and whiter whites.

### Greener Technology, Greater ROI

Solid-state technology means your projector will last an amazing 30,000 hours, with an environmentally friendly mercury-free design. No lamps to replace means less hassle and fewer added expenses over time.



### Ideal for Business & Travel

Lightweight and compact, the IN1100 Series is perfect for business travelers, or anyone who needs to take their presentation on the road.

# Specifications\*

	IN1156	IN1188HD
Native Resolution	WXGA (1280x800)	1080p (1920x1080)
Illumination Technology	LED, InFocus Quantum Color Engine	
Display Technology	DLP .45" S310	DLP .47" S410
Brightness	3000 Lumens	
Constrast Ratio (FOFO)	1,000,000:1	
Uniformity	JBMA 85% ANSI 70%	
Number of Colors	Over 1.08 Billion	
Aspect Ratio	9 Major Formats Supported (Native 16:10, 1:1, 2:1, 13:9, 15:9, 16:9, 4:3, 5:4, 2.35:1)	9 Major Formats Supported (Native 16:9, 1:1, 2:1, 13:9, 15:9, 16:10, 4:3, 5:4, 2.35:1)
Projection Lens (f-stop)	f1.7	
Zoom Ratio (x factor)	Fixed	
Throw Distance	0.8m-8.0m	
Throw Ratio	1.2	
Image width	30"-300"	
Offset	103%	
Keystone Vertical	± 40° Auto & manual	
Input	2x USB (Wifi / Multimedia), HDMI, VGA, Composite, 3.5mm audio in	
Output	3.5mm Audio out	
Basic PC Compatibility (Full Mode table required)	VGA(640x480) through WUXGA (1920x1200)	VGA(640x480) through WUXGA (1920x1200), 4K@30 and 2K@60 over HDMI
Video Compatibility	NTSC, NTSC 4.43, PAS/M/N, SECAM, 480i, 480p, 576i, 576p, 720p, 1080i, 1080P	NTSC, NTSC 4.43, PAS/M/N, SECAM, 480i, 480p, 576i, 576p, 720p, 1080i, 1080P, 4K@30 and 2K@60 over HDMI
3D	SVGA, XGA, 720p at 120Hz, page flipping, over-under, side-by-side. All modes work with DLP Link Glasses.	Supprts all HDMI 1.4a 3D formats, from Blu-ray, Cable Boxes, Dish Services, and more. Also Supports PC-Based 3D content Configured at 1080P 60Hz. All modes work with DLP Link Glasses.
Document Reader	Display document file on screen. pdf doc xls ppt docx xlsx pptx pps ppsx	
Video Player	AVI MP4 MOV MPG MPEG WMV MKV	
PhotoPlayer	BMP, JPG, Jpeg	
MusicPlayer	MP3, WMA,ADPCM-WAV(WAV), PCM-WAV(WAV), AAC	
H~Synch Range	VGA & HDMI : 15K ~102K Hz	VGA : 15k-103.1kHz HDMI : 15k-135kHz
V~Synch Range	VGA & HDMI : 24 ~120 Hz	
LED Power	106W	
LED Life	30,000 hours	
Standby Power	<0.5w low power standby	
Power Consumption	215W	
Noise (eco/norm)	33 dB(A) Bright/PC, 30 dB(A) Cinema/Photo/sRGB, 26 dB(A) Eco	
Power Supply Range	100V - 240V @ 50~60 Hz	
Operating Temp. and Altitude	for 0-2,500ft. '5°~40°, for 2,500 - 5,000ft. '5°~35°, for 5,000 - 10,000ft. '5°~30°	
Store Temp.	-10°C ~ 60°C	
Operating Humidity	10% to 85%, non-condensing	
Operating Pitch/Roll	360 degree operation	
OSD Languages	English, German, French, Italian, Spanish, Portuguese, Polish, Dutch, Hindi, Norwegian, Filipino, Malay, Romania, TChinese, SChinese, Japanese, Korean, Russian, Hungarian, Czech, Arabic, Thai, Turkish, Farsi, Vietnamese, Indonesian	
Documentation Languages	English, French, German, Spanish, Italian, Norwegian, Dutch, S. Chinese, Korean, Portuguese, Swedish, Russian, Arabic, Indonesian	
Certifications	cTUVus/CB report/FCC/CE EMC/ UV(Bauart)/CCC/PSB/ NOM/CU EAC/RCM/ EN62471-5/CECP/KC/KCC/BSMI/Energy Mexico	
Speaker	3W Speaker X 1	
Dimension	297x200x56mm (w/o feet)	
Weight	2.0kg (4.4lb)	2.0kg (4.4lb)
Ceiling Mount	Yes	
Remote Control	Navigator-5	
Standard Accessories	User Manual (CD), QSG, Warranty Card, HDMI cable, Carry Bag, Regional Pwr Cord (1.8m), Remote Control (NO BATTERIES), lens cap	
Other Features	3D ready (DLPLink), 3D 120Hz PC	3D ready (DLPLink), 3D 120Hz PC, 4K input
Security	Kensington Lock	

\*Product specifications, terms, and offerings are preliminary and subject to change at any time without notice.

## Optional Accessories

- Universal Ceiling Mount (PRJ-MNT-UNIV)
- LiteShow 4 DB+ Dual Band Wireless Adapter (INLITESHOW4DB+)
- LiteShow Mount (PRJ-MNT-LS3)
- Soft Carry Case (CA-SOFTCASE-VAL3)
- WiFi dongle (INA-WIFIUSB-5)
- SimpleShare Wireless Presentation Solutions (INA-SIMS1, INA-SIMPS1, INA-SIMINT1)
- DLP Link 3D Glasses (X103-EDUX3-R1)
- Extended Warranties (EPW-PJV1, EPW-PJV2)

